

20 September 2019

Rejoice!



Prep to Year 8 students at the Traralgon Campus presented a wonderfully colourful and enjoyable performance of Seussical Jr!



Chairo
Christian School

There is not one blade of grass, there is no colour in this world that is not intended to make us rejoice.

John Calvin

OPENINGS AND MORE OPENINGS

We have recently held some official openings of wonderful new facilities that we have been blessed with at Chairo, and further events will be held at Pakenham in October.

Chairo Cultural Centre

The new performing arts facilities at the Drouin Campus were officially opened on Friday 6 September by Board Chairman, Jeff Calway.

The event was attended by members of the school and wider communities, including Gary Blackwood MP and Councillor Mikaela Power, and the program featured a number of excellent performing arts items by students.

On the same day, an area in the centre was officially named the WR Bray Gallery in honour of long-serving past-principal, Rob Bray, who was present for the occasion.

The six-million dollar Chairo Cultural Centre, which includes a 400-seat state-of-the-art theatre known as The Balfour, as well as multiple music and drama learning areas, was completed early this year.



The centre is also home to a Yamaha C7 grand piano, which was generously donated by Dr Bruce Livett, at the suggestion of well-known local pianist Brian Chapman, and transported from Kununurra in Western Australia.

The centre has already been the venue for multiple events, including a VCE theatre class presentation of excerpts from *Little Women*, concerts by Christian entertainer Colin Buchanan, performances by the Hohidiai Choir, VCE music recitals and the recent Middle School production of *Charlie and the Chocolate Factory*.

Drama teacher, Michal Gaylard said, 'The Balfour, and all the other facilities in the new centre, are quite remarkable. We've just experienced first-hand the benefit of being able to rehearse and then perform a stage production in our very own theatre. I'm pretty excited!'.

Leongatha Kinder

The new kindergarten at the Leongatha Campus was officially opened by Principal Anthony Collier at a special event on Wednesday morning this week.

Establishment of the kindergarten this year was an exciting development, having been dreamt of for many years by families and staff members.

Anthony said, 'Excellent early childhood education is a critical step in the formation of young people and it's so wonderful to now have Chairo Kinder in Leongatha. This represents real choice for families in the South Gippsland area'.

Creating a space for the kindergarten programs involved a major conversion and refurbishment of two existing classrooms, with the vast majority of the works being completed by Des Wallace and Peter Wardle from our maintenance team.

The facilities feature a large learning space that caters for up to 22 students and is full of natural light and plenty of room for active and engaging play-based learning.

There is also generous storage, plus a kitchen with a child-height bench for easy participation in cooking activities, large undercover play area with a massive sandpit and large outdoor area shaded by a beautiful tree.



Pakenham Buildings

Stage 1 of the Senior School Centre at the Pakenham Campus will be officially opened by Jason Wood MP, Member for La Trobe, on Monday 28 October.

Principal Pete Wells said: 'The development of the Senior School Centre provides flexible, state-of-the art learning spaces for our senior students. We are thankful for the building of environments, and the cultures within them, that foster learning and community.'

Immediately following the opening of the Senior School Centre, the focus will shift to nearby facilities (officially opened in October 2016) for the naming of the McAllister Design & Technology Centre in honour of long-serving Campus Principal, Steve McAllister.

GOVERNANCE NEWS

Association General Meeting

The next general meeting of our Association, which operates all Chairo campuses, will be held at the Drouin Campus on Thursday 14 November from 7.30 pm. All parents/guardians and staff members are encouraged to attend what will be an informative and enjoyable evening. More information will be provided soon.

Full membership

Full members of our Association are able to vote at general meetings and nominate others for election to serve on the Board. Current parents/guardians who are Christians and fully supportive of our Articles of Faith, and who have been associate members for at least six months, are able to apply to become full members. Application forms can be obtained by contacting the office at any campus.

Board Election

Do you know someone who you believe might be ready, willing and able to serve a term on the Board, commencing at the start of 2020? Perhaps that might even be you!

Full members of the Association are invited to prayerfully consider who they might be able to nominate (with the nominee's consent). To be eligible for nomination, the potential Board member needs to be a Christian who has been a Chairo parent for at least six months, and cannot be a staff member.

Elections will be held at the general meeting on Thursday 14 November. Nominations will be accepted until Tuesday 8 October. Forms are available from Caroline Weatherhead (cweatherhead@chairo.vic.edu.au) or Darryl Martin (dmartin@chairo.vic.edu.au).

SPOTLIGHT ON T&L AT DROUIN

T&L (Teaching and Learning) at Drouin and Drouin East, as at all of our campuses, continues to be a dynamic partnership between students, teachers and parents, holding God at the centre. We are grateful for the way that God has created us to be thinking and learning beings.

It has been exciting to see the opportunities that the SOAR program has blessed us with. Recently we have had visits from the Robot Man (Steve Reiher) and author Tim Harris, a puppetry and performance workshop, a chess competition, VicSpell, Tournament of the Minds and ICAS assessments.

Along with this, students have participated in the Hack-a-thon, STEM workshops, creative writing competitions, debating and an Indonesian writing competition. We congratulate our students on the way that they made the most of these opportunities to extend their learning.

It has also been exciting to have the opportunity to further develop SOAR in the classroom. Teachers met together to reflect on what it means when a student shows exceptional ability in a particular area and how we can best identify and equip students for transformation. Working together, staff members grappled with the individual needs that students have, and considered how we can best respond to and nurture these needs.

We look forward to helping students continue to discover and develop their God-given gifts, abilities and character in Term 4.



DEEPER LEARNING

It is Chairo's vision 'to see Christ's redemptive impact in the world through the capability, character and commitment of our students'.

But how do we take this vision and make it a reality in our classrooms and within the Chairo community? How do we engage students in deeper learning and make our vision statement reality? All those within our community need to build purposefully into the lives of students in order to fulfil this deep hope.

We do this by providing continual opportunities for staff members to build their capacities as Christian teachers and role models, equipping them with the tools and skills required to make a positive difference and impact the lives of students for eternity.

The Deeper Learning Hub describes aspects of curriculum and pedagogy to take into account when planning for deeper learning. Let's explore a few of these considerations.

Content Mastery

Mastering subject content doesn't imply that students will rote learn a set of dates or key knowledge. Instead, it requires teaching that enables students to 'understand, test and critique the underlying meanings and assumptions in the material they are exploring' (*Transformation by Design: Crafting Formational Learning 2019*, p. 127).

Our mission is 'to provide excellence in Christ-centred education, in partnership with families, within a caring Christian community'. Excellence can often be misunderstood and misinterpreted. We need to ensure balance between 'learning for understanding, learning for appreciation and learning for responsive action' (*Transformation by Design: Crafting Formational Learning 2019*, p. 127).

Collaboration

God created us to live in community with one another: 'Each of you should use whatever gift you have received to serve others, as faithful stewards of God's grace in its various forms'. (1 Peter 4:10–11).

Christian school communities are built on the foundation of God's love for us and His command for us to love one another. This must be lived out in everything that the school undertakes.

Learning to work together and to celebrate the gifts of classmates and colleagues is a rich experience and provides ample opportunities for deep learning as we strive to reach co-created goals that serve authentic purpose and meaning.

Critical Thinking and Problem Solving

Students need to be provided with opportunities to be curious and ask questions about their God-given purpose

in this world. Teachers should scaffold this inquiry approach to provide examples of how to ask appropriate and thought provoking questions that will enable deep discussions and critical thought.

'Learning that immerses students in rich and well-crafted inquiry and investigative learning experiences is a powerful teaching and learning methodology. Students come to recognise the power of discovery and inquiry as they are actively engaged in their own learning' (*Transformation by Design: Crafting Formational Learning 2019*, p. 132).

While we have not explored all aspects of deeper learning as outlined by the Deeper Learning Hub, we can see that this pedagogical methodology provides a way of accessing and critiquing information that is biblically focused and has the ability to transform the hearts and minds of students.

'Bringing every thought in subjection to Jesus Christ means making the deliberate choice to recognise non-neutrality and to recognise His lordship over our thinking and processes' (Edlin, R. & Ireland, J. [2006] *Inhabiting the Mindfield: Why We Think the Way We Do, and What To Do About It* in Edlin, R. & Ireland, J. [Eds.] *Engaging the Culture: Christians at Work in Education*, p. 68).

UNKNOWN DEPOSIT

The Finance Department has received an unknown deposit of \$250 in May that does not have a valid parent code. If you believe you have made this deposit, please contact the Finance Department with details of the deposit, including the reference used and date of deposit.

SIBLING ENROLMENTS

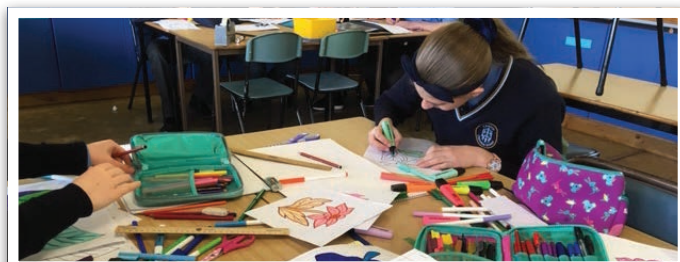
If you have younger children that you would like to enrol to commence at Chairo in 2020, 2021 or 2022—whether for K3 or K4 Kinder, Prep or other year levels—please contact Fiona Powell on 5625 4600 (Drouin East and Drouin), Hannah Sollberger on 5942 5632 (Pakenham), Wendy Nyhuis on 5662 4355 (Leongatha), Tonya Russell on 5173 0500 (Traralgon) or email your enquiry to enrolments@chairo.vic.edu.au. It is important that families do this as soon as possible so we can reserve a spot for you before offering places to new families.

EXIT REQUIREMENTS REMINDER

Parents are reminded that a full term's notice is required if you wish to end your child's enrolment at Chairo for any reason. If this notice is not given, fees for the notice period will be charged unless there are exceptional circumstances.

If financial pressures are a concern, you are encouraged to contact our finance department prior to contemplating change. In most cases, we are able to assist families to continue to enjoy and benefit from a Chairo education. Thank you for your ongoing support.

LEONGATHA





Car Boot Sale & Market

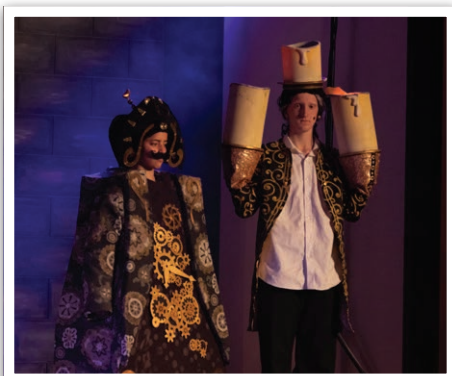
Saturday 16 November
8.30 am - 1.00 pm

Chairo Christian School
101 Horn Street Leongatha

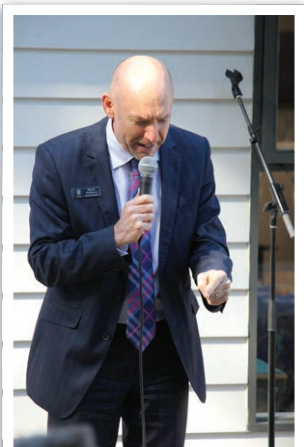


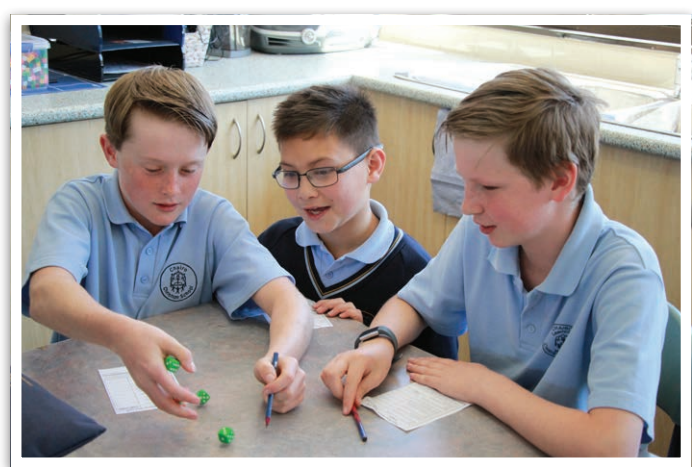
Free activities including jumping castle,
fairy floss, popcorn and face-painting



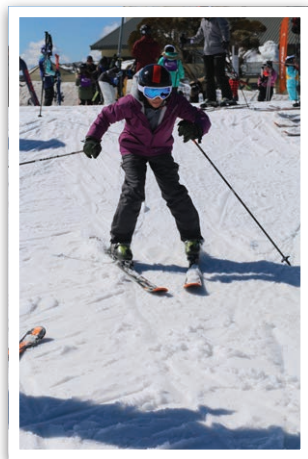
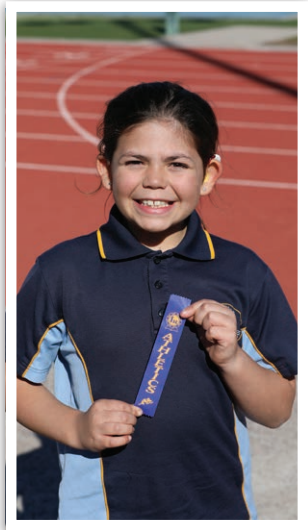



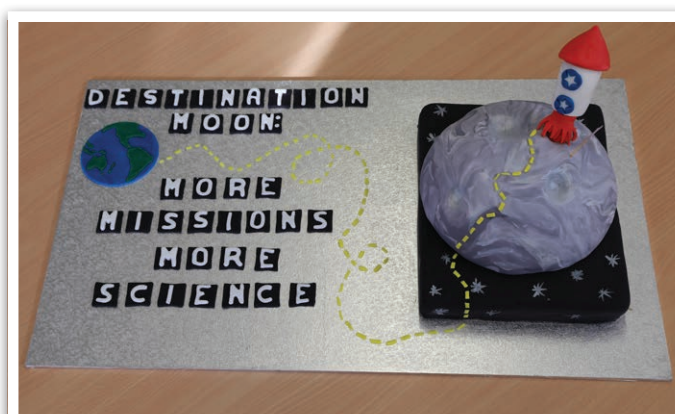
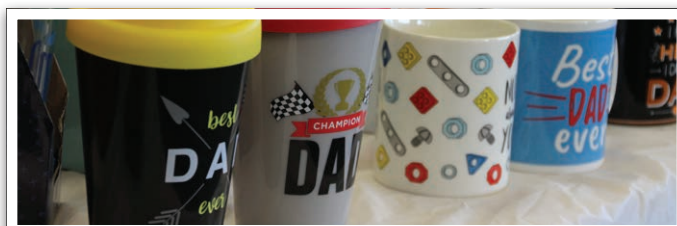


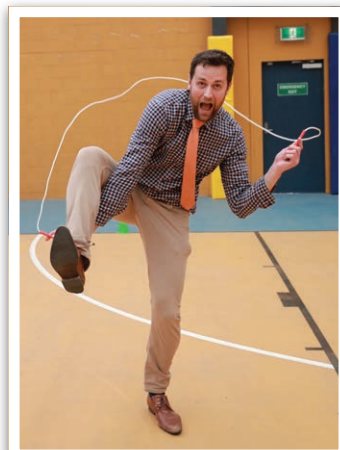
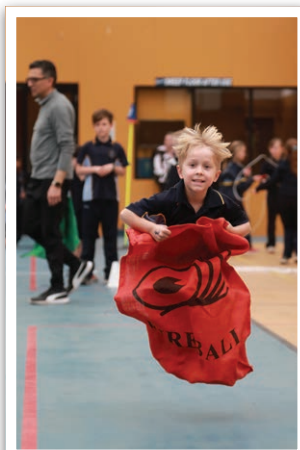
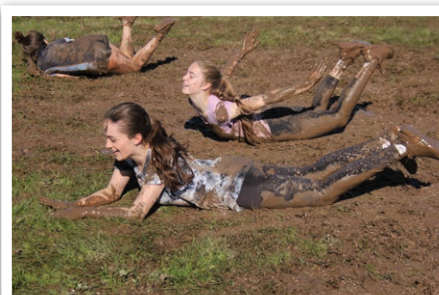




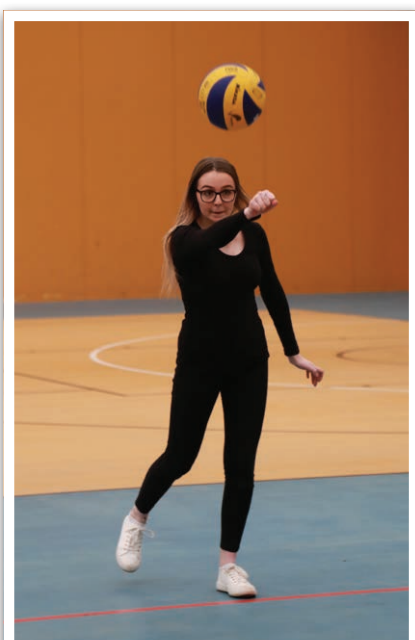
PAKENHAM





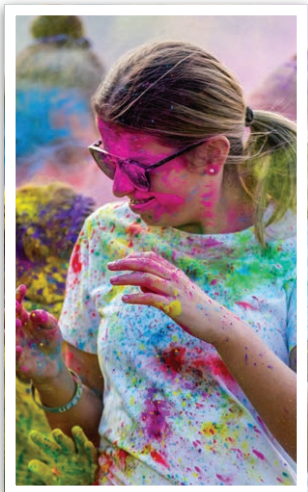


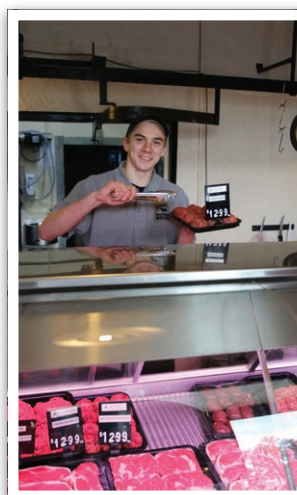


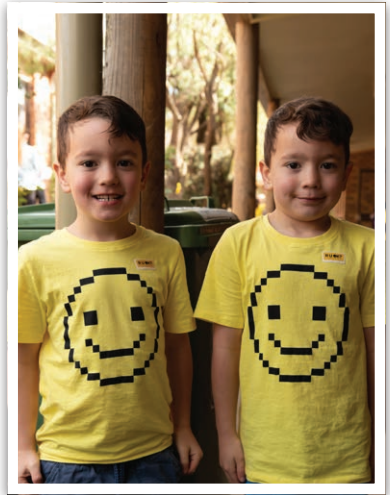
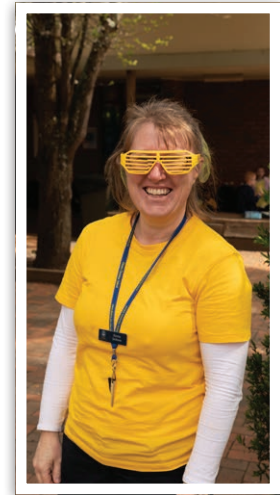




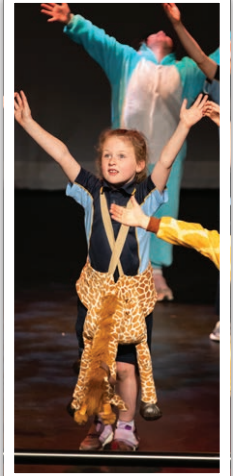
DROUIN & DROUIN EAST



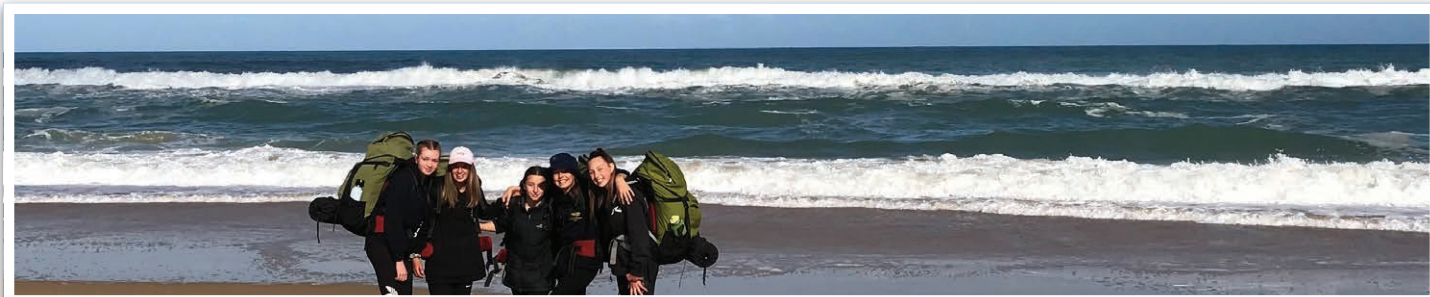


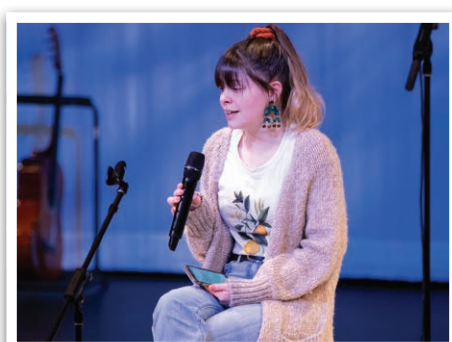
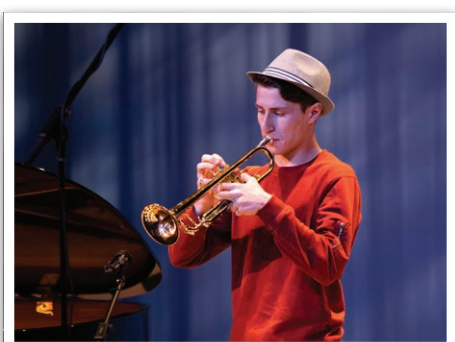
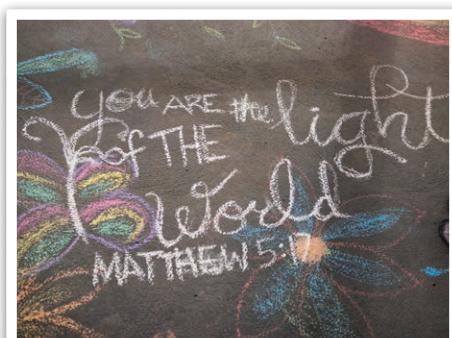


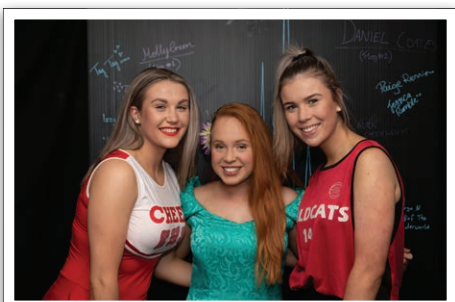












TRARALGON

